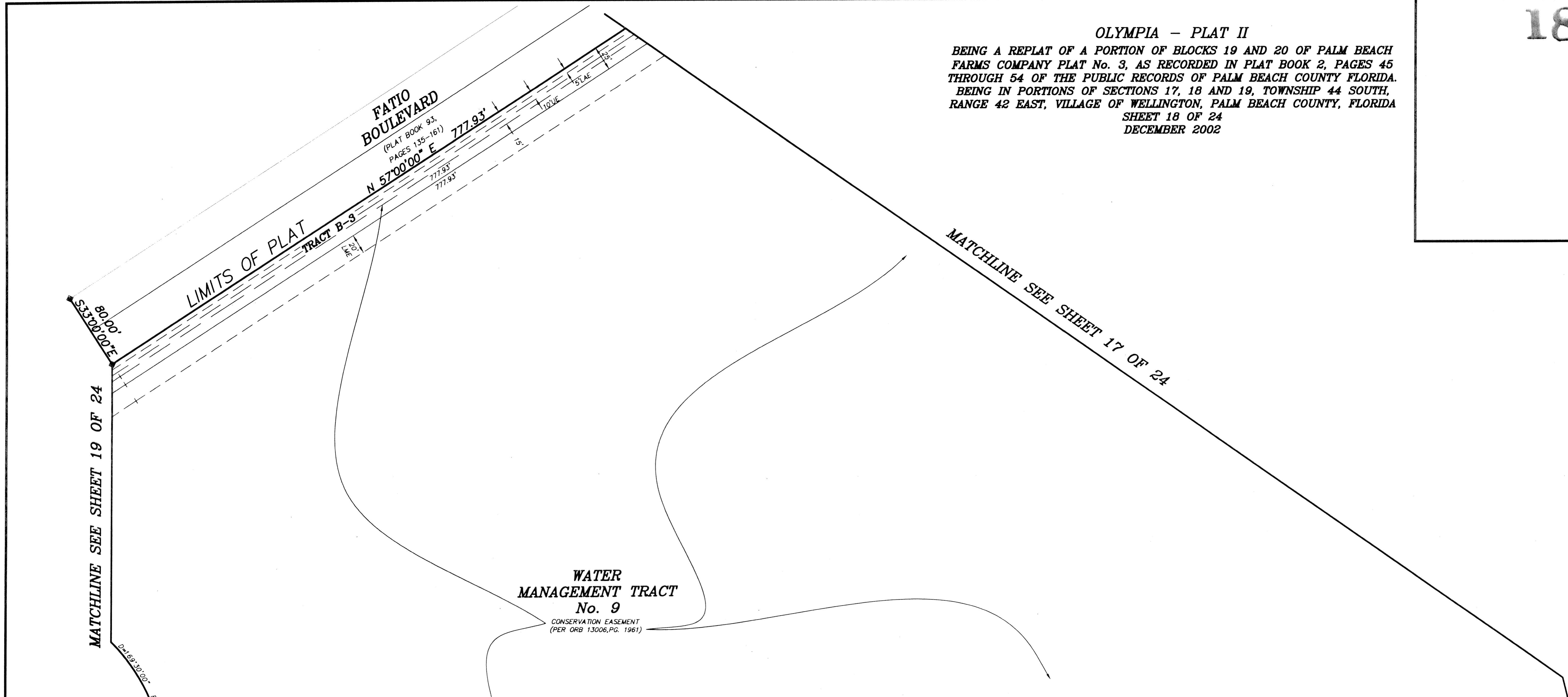


OLYMPIA - PLAT II

BEING A REPLAT OF A PORTION OF BLOCKS 19 AND 20 OF PALM BEACH FARMS COMPANY PLAT No. 3, AS RECORDED IN PLAT BOOK 2, PAGES 45 THROUGH 54 OF THE PUBLIC RECORDS OF PALM BEACH COUNTY FLORIDA. BEING IN PORTIONS OF SECTIONS 17, 18 AND 19, TOWNSHIP 44 SOUTH, RANGE 42 EAST, VILLAGE OF WELLINGTON, PALM BEACH COUNTY, FLORIDA SHEET 18 OF 24 DECEMBER 2002



MATCHLINE SEE SHEET 19 OF 24

MATCHLINE SEE SHEET 17 OF 24

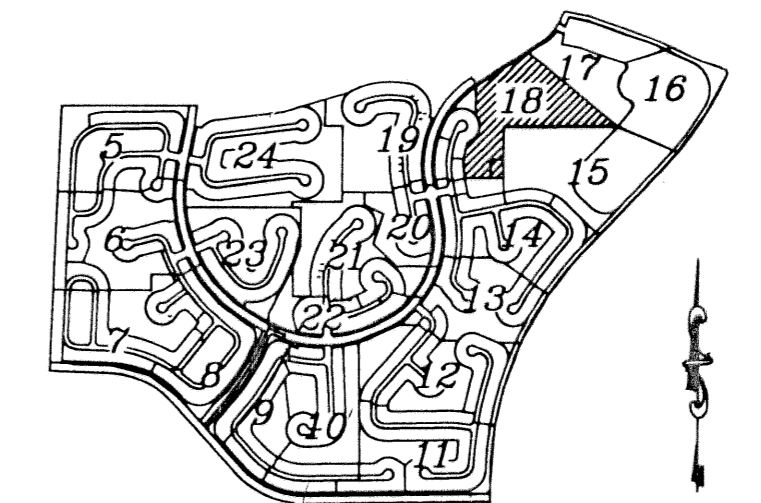
WATER MANAGEMENT TRACT No. 9 CONSERVATION EASEMENT (PER ORB 13006, PG. 1961)

MATCHLINE SEE SHEET 15 OF 24

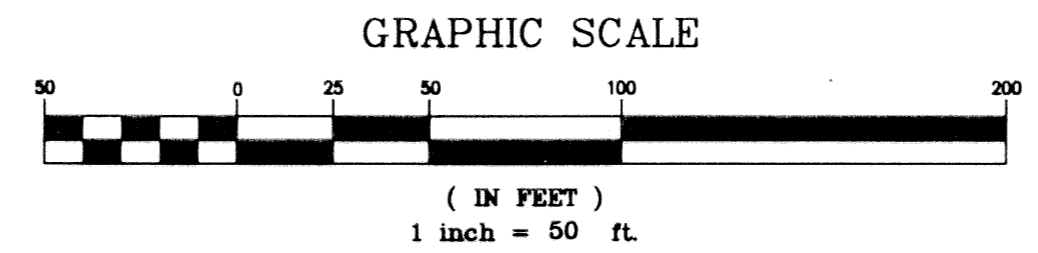
D=47°30'44\"/>

MATCHLINE SEE SHEET 20 OF 24

SHEET INDEX



- LEGEND: D= DELTA (CENTRAL ANGLE) L= LENGTH R= RADIUS PSM= PROFESSIONAL SURVEYOR AND MAPPER PLS= PROFESSIONAL LAND SURVEYOR LAE= LIMITED ACCESS EASEMENT MREE= MAINTENANCE ROOF AND EAVES EASEMENT UE= UTILITY EASEMENT DE NO.1= DRAINAGE EASEMENT No. 1 IDE G-1= INTERIOR DRAINAGE EASEMENT No. G-1 WMT= WATER MANAGEMENT TRACT ORB= OFFICIAL RECORD BOOK P.B.= PLAT BOOK PG.= PAGE (R)= RADIAL (x) = SET PERMANENT REFERENCE MONUMENT "LB 4318" (UNLESS OTHERWISE NOTED) (●) = PERMANENT CONTROL POINT "LB 4318" LME= LAKE MAINTENANCE EASEMENT CL= CENTERLINE LMAE= LAKE MAINTENANCE ACCESS EASEMENT LWDD= LAKE WORTH DRAINAGE DISTRICT CB= CHORD BEARING CD= CHORD DISTANCE PBC= PALM BEACH COUNTY



OLYMPIA - PLAT II NICK MILLER, INC. Surveying & Mapping Consultants SHEET NO. 18 SCALE: 1" = 50' DATE: DECEMBER 2002 JOB NO. 1008.044 FILE: PHASE II